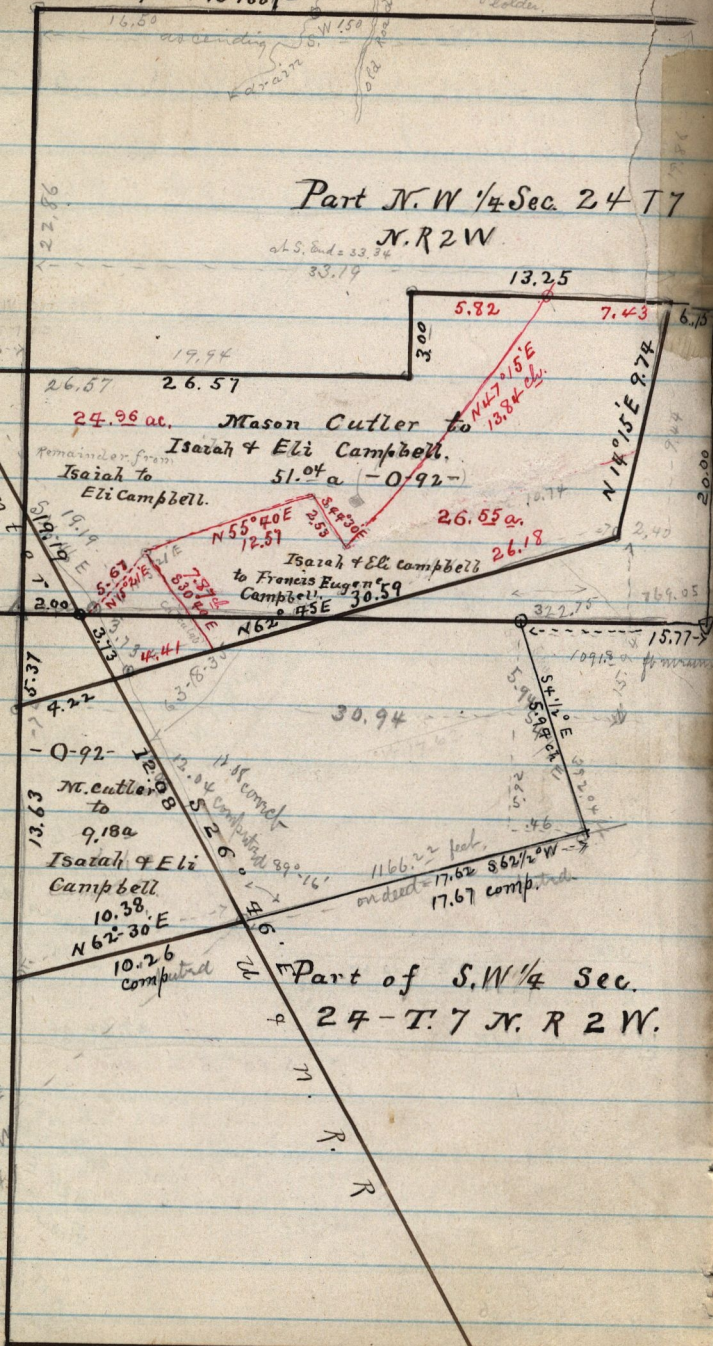


April 13-1887

large limestone  
beds

Part N.W 1/4 Sec. 24 T7  
N. R 2 W.

at S. end = 33.34  
33.19



SW. cor. N.W 1/4 Sec 24 T7 N. R 2 W.

24.96 ac. Mason Cutler to  
Isaiah & Eli Campbell.  
Remainder from  
Isaiah to  
Eli Campbell. 51.04 a (-0.92)

Isaiah & Eli Campbell  
to Francis Eugene  
Campbell. 30.59

Part of S.W 1/4 Sec.  
24 - T. 7 N. R 2 W.

N 65° 55' E  
S.W. cor. N.W  
1/4 Sec. 24